



## The Juniper

COLLECTION

**Main Floor: 2,690 sq. ft.**

- 4 bedrooms
- 2.5 baths
- 3 car attached garage
- Home office
- Covered front porch
- Wide doorways and hallways
- Hard surface flooring
- Zero entry
- Sanitation / storm room



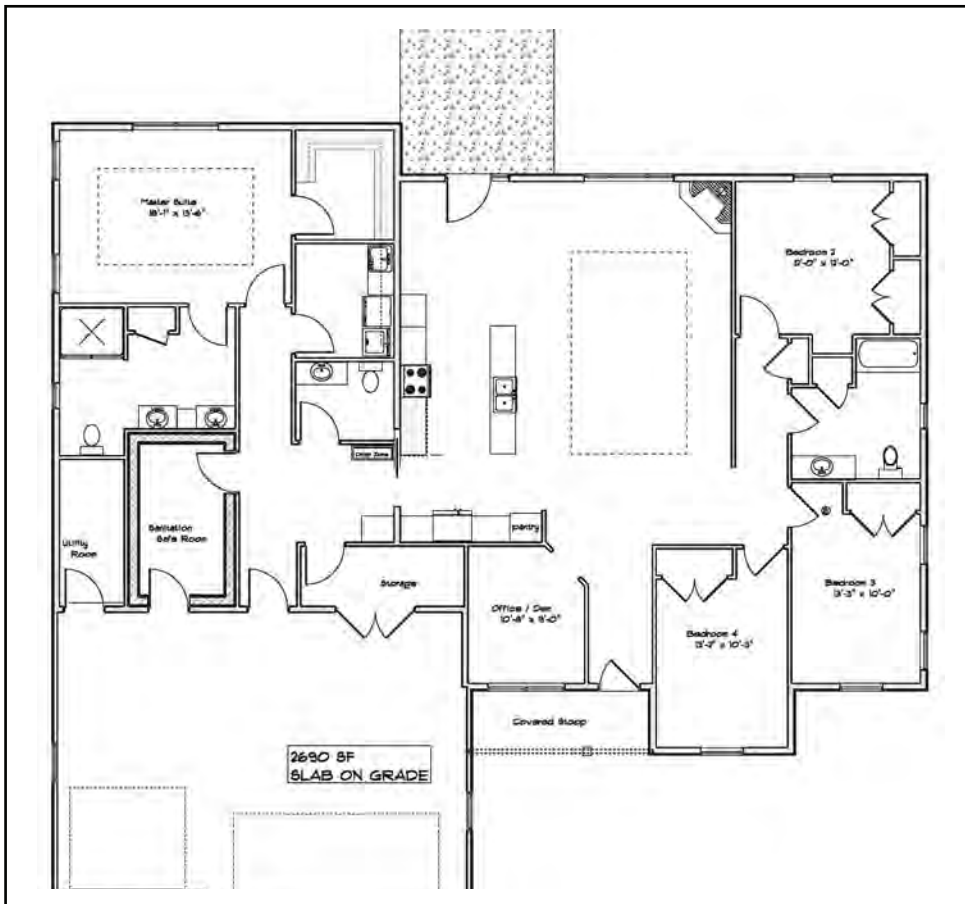
This home design features considerations for safety and aging in place, including wide hallways, spacious bathrooms, wide doors, a storm shelter and no steps. It also allows for numerous upgrades to provide for a healthy living environment. The exterior of the home is primarily maintenance free, including vinyl siding and stone and concrete patio. The interior has spacious living areas with wide doors and hallways. Finishing touches include an upgraded trim package, high quality cabinets and quartz countertops throughout. The floor plan can also be easily customized to a ranch style with a basement by our in-house design team.



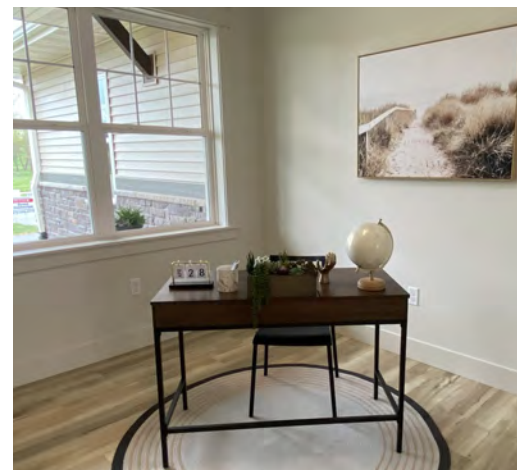


# PRK Williams Building Group

Develop • Design • Build • Remodel



Main Floor



(319) 538-2989  
Info@PRKWilliams.com  
PRKWilliams.com

