



The Maple

COLLECTION

Main Floor: 1,365 sq. ft.

Lower Level: 930 sq. ft. unfinished

- 3 bedrooms
- 2 full baths
- 2 car attached garage
- Open floor plan
- Primary suite with walk-in closet
- Main level laundry
- Walk in pantry
- Eat in kitchen
- Stone and vinyl siding

This beautiful home is an open concept ranch design with three bedrooms, two full baths, and a two car attached garage. The entryway opens to a comfortable living room and an open kitchen with all stainless steel appliances provided for you. The primary bedroom features a full bath and a walk-in closet.

Optional healthy home additions to consider include:

- Air quality monitor
- Touchless faucets
- Water filtration
- Motion sensor light switches

This home has a universal design offering spacious four foot wide hallways and three foot wide doorways. In all of our homes we feature dovetail soft close drawers and cabinets, vinyl siding with at least a .042" thickness, high performance double paned Gerken windows, luxury vinyl tile flooring, additional flashing to ensure a sealed foundation and remote key pad entry for the garage door.

An unfinished basement provides the homeowner the ability to customize the space to fit their personal needs. The lower level has plumbing stubbed for an additional bathroom and could offer an additional living area, more bedrooms, an office, a gym, a home theater or any combination of uses. It is yours to decide when the time is right.

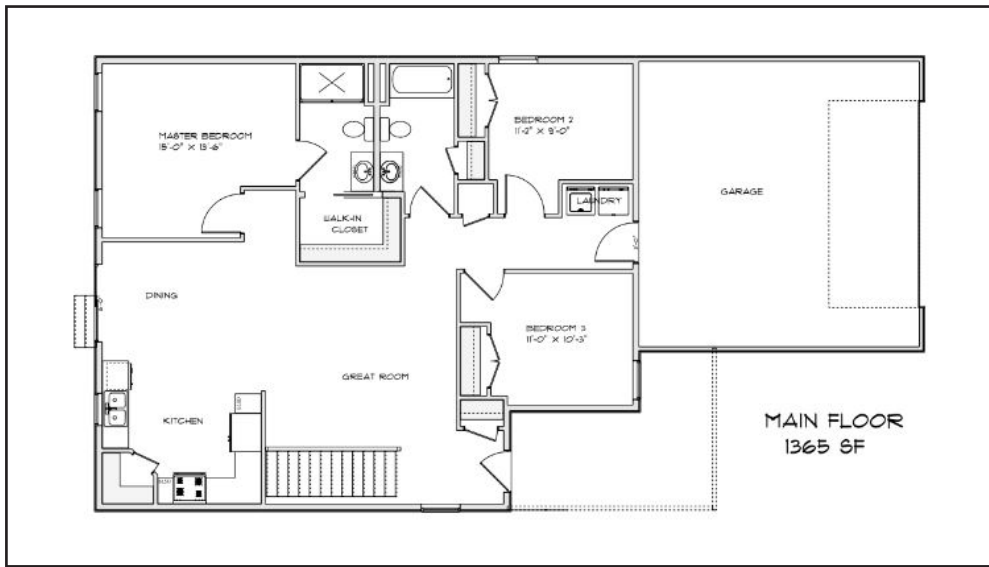
Our attention to detail and quality materials and workmanship makes this a worry-free home that is meant to last. It is a huge honor and responsibility to be trusted to build your home. This is a responsibility that we take very seriously at PRK Williams Building Group.



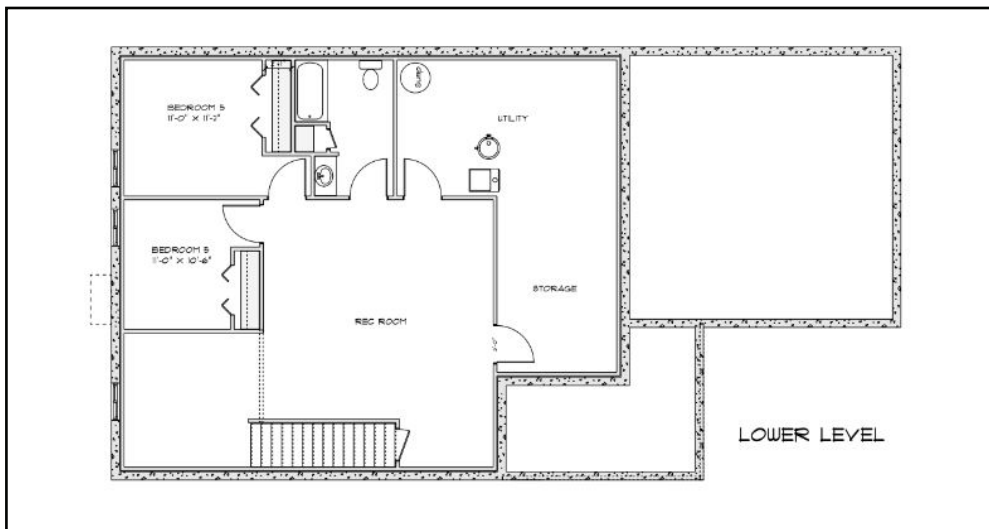
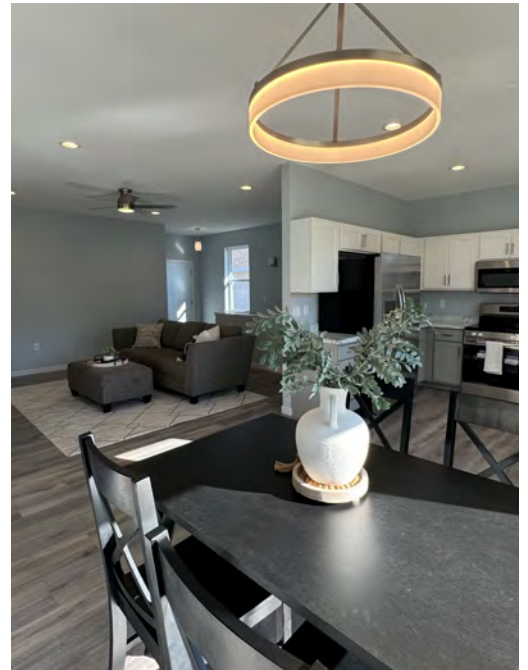


PRK Williams Building Group

Develop • Design • Build • Remodel



Main Floor



Lower Level



(319) 538-2989
Info@PRKWilliams.com
PRKWilliams.com

