



**PRK Williams
Building Group**

Develop • Design • Build • Remodel



The Twin Pines I

COLLECTION

Main Floor: 1,482 sq. ft.

Lower Level: 1,040 sq. ft. finished

- 4 bedrooms
- 3 full baths
- 3 car attached garage
- Large family room
- Electric fireplace
- 9 ft ceilings
- Tray ceiling in living room and primary bedroom
- Luxury vinyl plank floors
- Covered deck and front porch
- Spacious pantry



Discover effortless living in this stunning new construction duplex designed with comfort, style, and long-term livability in mind. Each thoughtfully crafted twin home offers 1,482 sq. ft. on the main level with an optional 1,040 sq. ft. finished lower level, featuring two additional bedrooms, bath, and a spacious family room—perfect for guests or flexible living.

Enjoy zero-entry access where possible, universal design elements like 3-foot doors and 4-foot hallways, and a 3-car attached garage for everyday ease. High-end finishes include 9-foot ceilings in the main

level, tray ceilings in the living room and primary suite, an electric fireplace, luxury vinyl plank flooring in common areas, and plush carpeted bedrooms. The kitchen shines with quartz countertops, soft-close cabinetry with dovetail drawers, a spacious pantry, and stainless-steel appliances. A covered front porch and deck extend your living space outdoors.

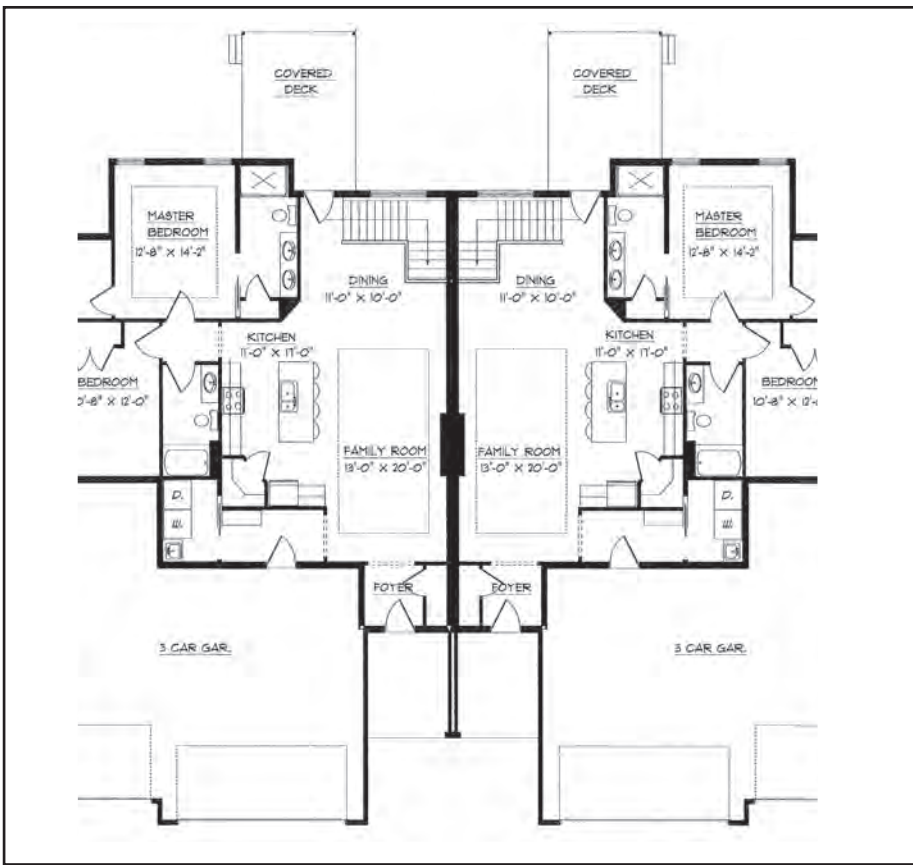
All PRK Williams Building Group's homes come equipped with a SONA whole-home 24/7 air purification system, allowing you to breathe only the purest air in your home.

**Photos of similar home*

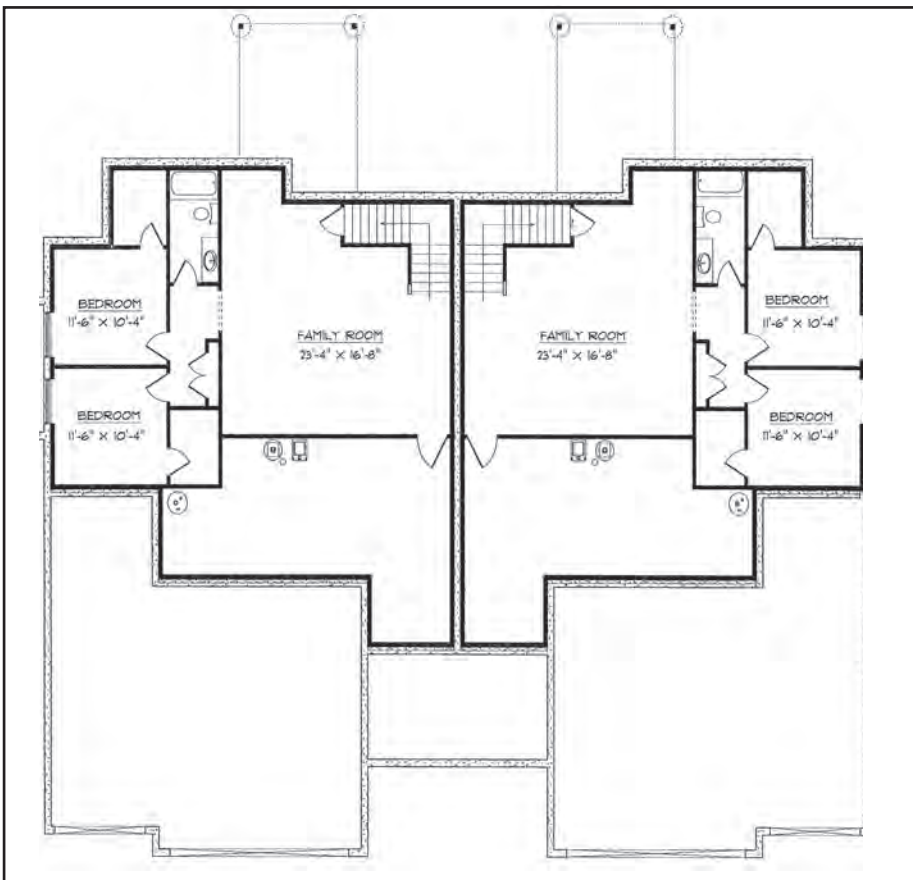


PRK Williams Building Group

Develop • Design • Build • Remodel



Main Floor



Lower Level



☎ (319) 538-2989

✉ Info@PRKWilliams.com

🌐 PRKWilliams.com

