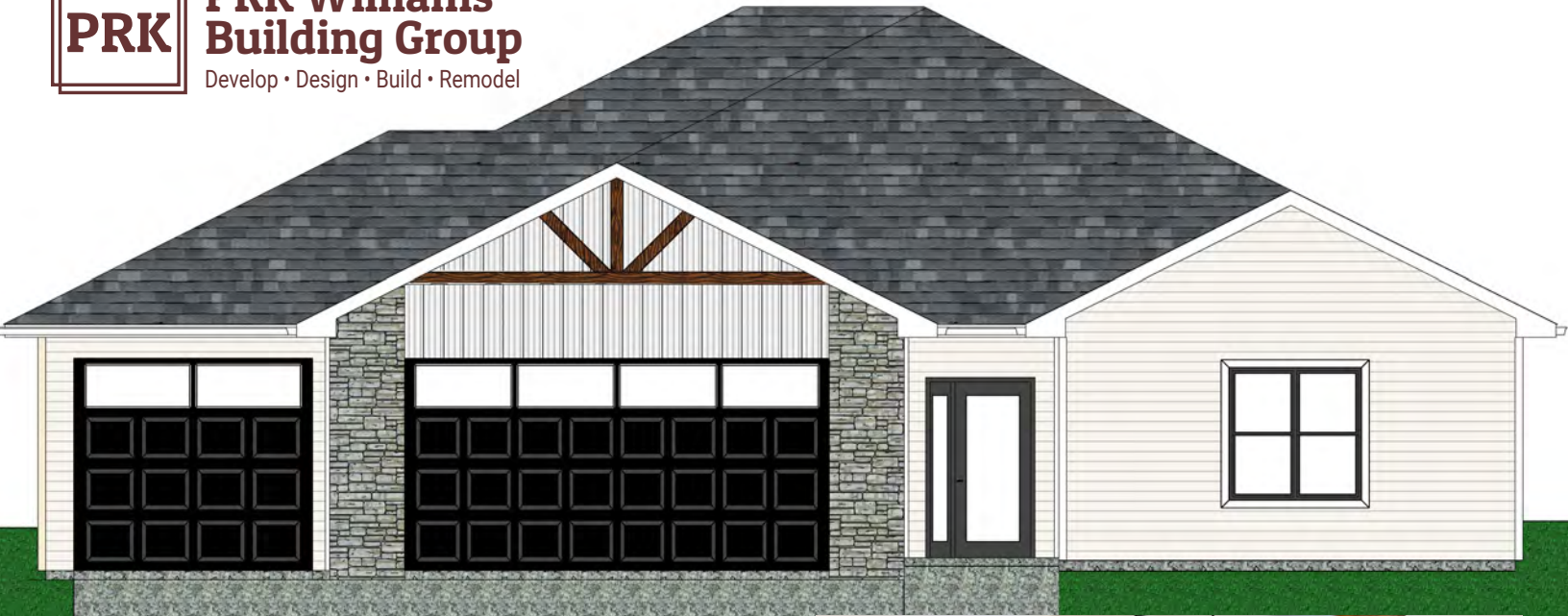




PRK Williams Building Group

Develop • Design • Build • Remodel



The Willow COLLECTION

Main Floor: 1,648 sq. ft.

Lower Level: 1,380 sq. ft. finished

- 5 bedrooms
- 3 full baths
- 3 car attached garage
- Large kitchen island
- 9 ft tray ceilings - main level
- Walk in pantry
- Main level laundry room
- Large rec room - lower level
- Wet bar - lower level



Experience timeless design and effortless living in this stunning new construction home, thoughtfully crafted with universal design such as wider doorways and walkways for comfort and ease at every stage of life. This large home offers an open floor plan and spacious family rooms with a lower level wet bar—ideal for gathering, relaxing, or entertaining.

Highlights include 9-foot ceilings, luxury vinyl plank floors and an inviting electric fireplace beneath a tray-ceiling living room. The kitchen is both stylish and functional with quartz countertops, a spacious corner pantry, soft-close cabinetry with dovetail drawers, and stainless-steel appliances.

Outdoor living is equally impressive with a deck, concrete patio, and charming natural wood and stone details on the home's exterior.

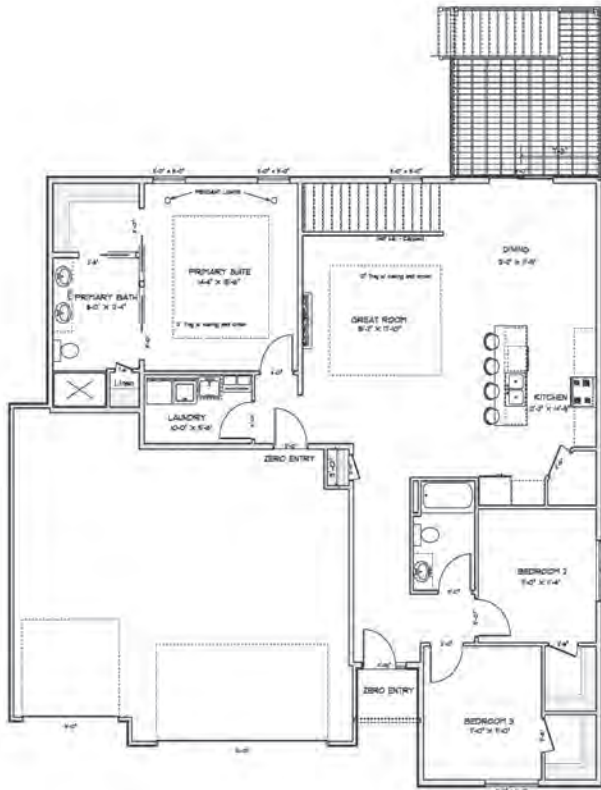
All PRK Williams homes come equipped with a SONA whole-home 24/7 air purification system, allowing you to breathe only the purest air in your home.

**Photos of similar home*

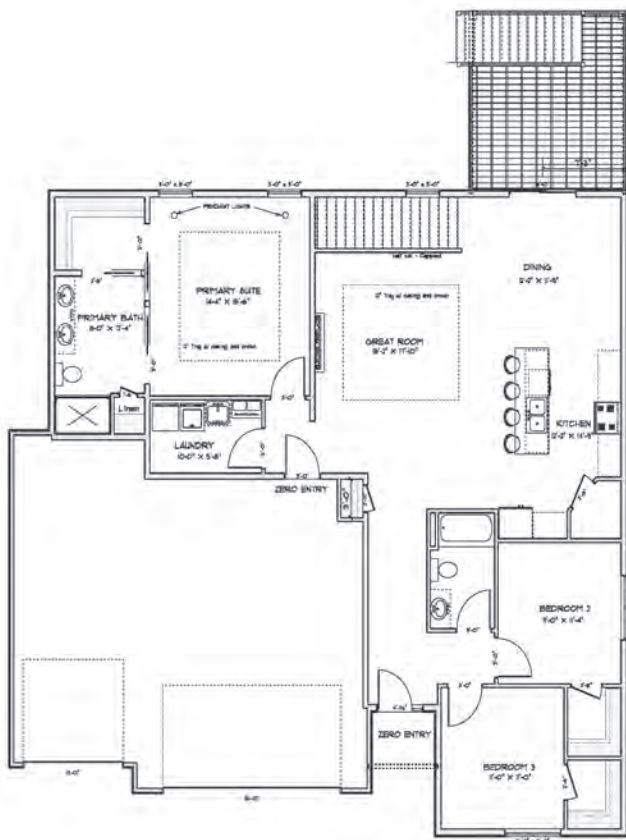


PRK Williams Building Group

Develop • Design • Build • Remodel



Main Floor



Lower Level

(319) 538-2989

Info@PRKWilliams.com

PRKWilliams.com

