

# HAWTHORNE DESIGN

6122 Cope Drive, Marion, IA  
Only \$379,000



**PRK Williams  
Building Group**

Develop • Design • Build • Remodel



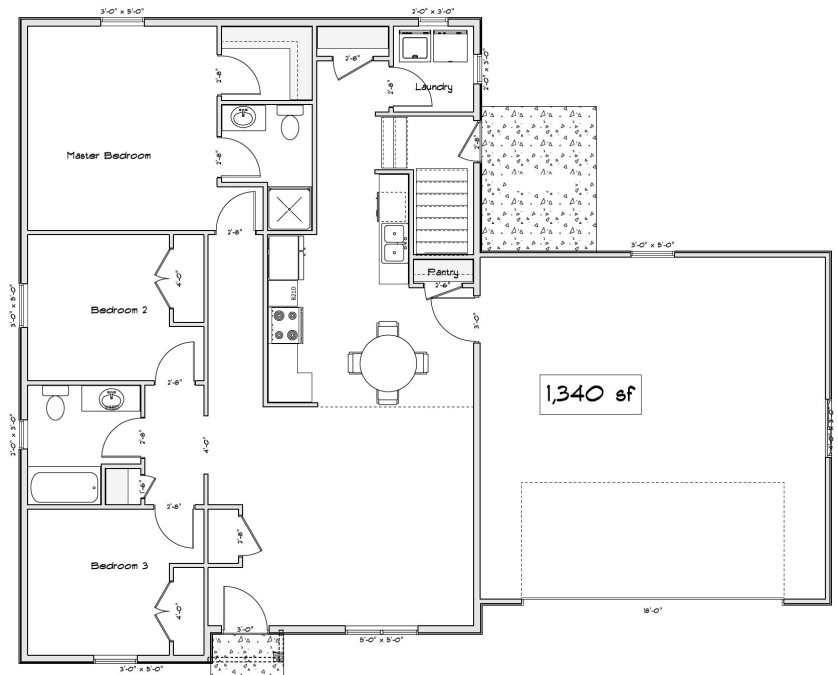
This home is a warm and welcoming ranch with five bedrooms, three full baths and two-car attached garage. The entryway opens to a comfortable living room and an open kitchen with stainless steel appliances. The master bedroom features a full bath and walk-in closet. The lower level boasts an oversized family room with plenty of additional storage space.

## Home Highlights

- Walk-out door to patio
- Refrigerator, range, microwave, dishwasher
- Master suite with walk-in closet
- Finished lower level
- Large rec room on lower level
- Plenty of storage
- Main level laundry connections
- Gable roof design

## Home Details

- 5 bedrooms
- 3 full baths
- Main floor 1,340 sq. ft.
- Lower floor 990 sq. ft.
- Lot size 8,780 sq. ft.



# Building Dreams Into Dream Homes

BRAND NEW CONSTRUCTION • BUDGET FRIENDLY • CONVENIENT



**CALL US TODAY (319) 538-2989**

Contact us by email [info@prkwilliams.com](mailto:info@prkwilliams.com) or visit us on the web [prkwilliams.com](http://prkwilliams.com)